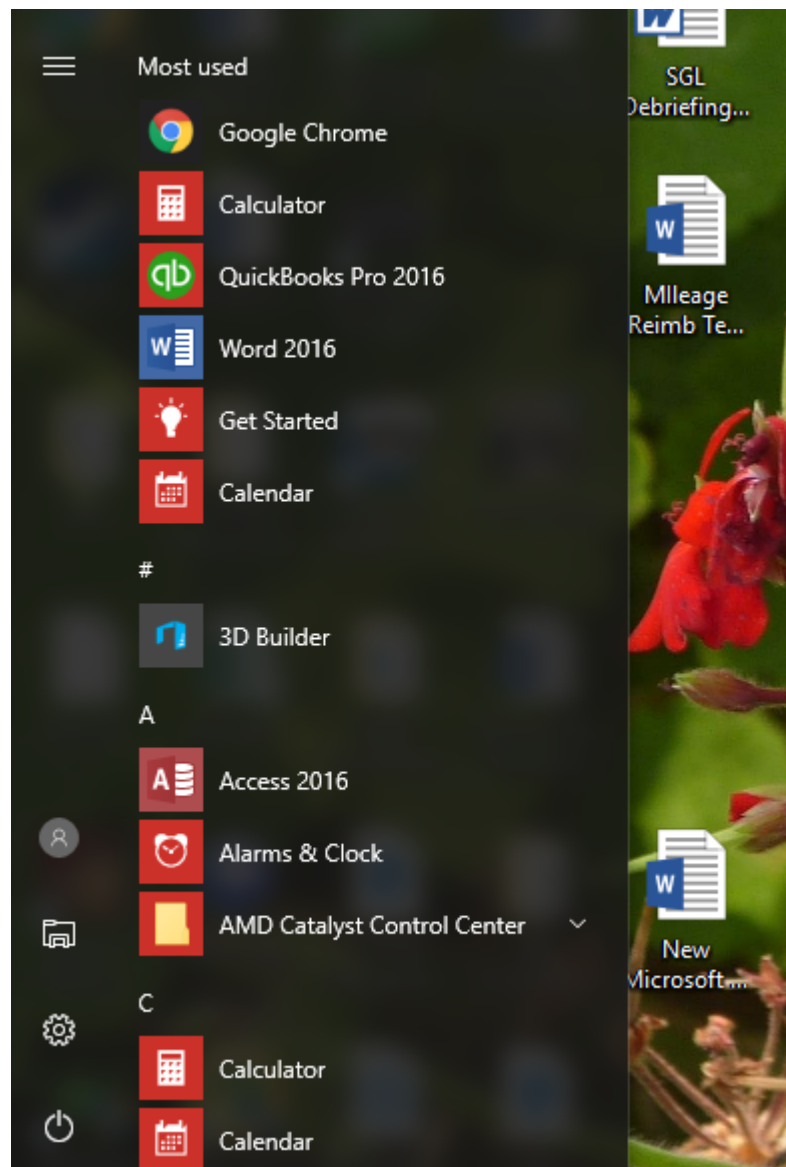


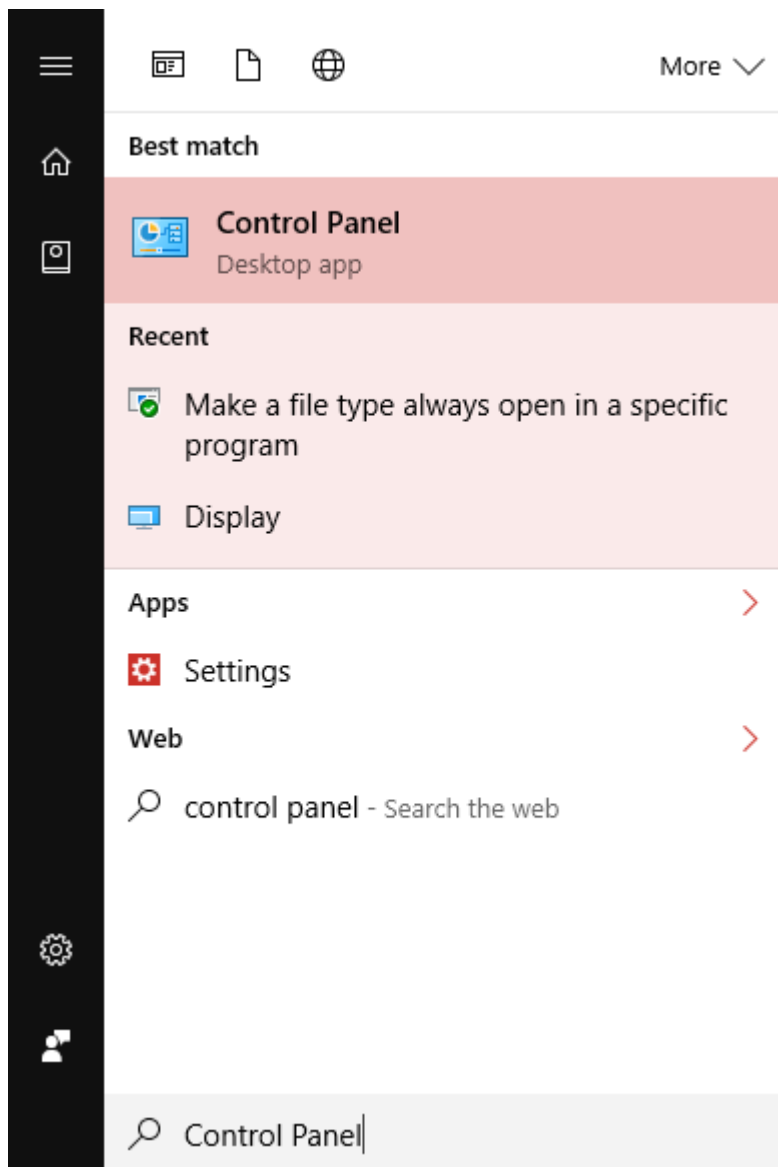


Selected the Correct App to Run GMM in Windows 10

1. Click on the Windows icon in the bottom left corner of the screen. You should see this:

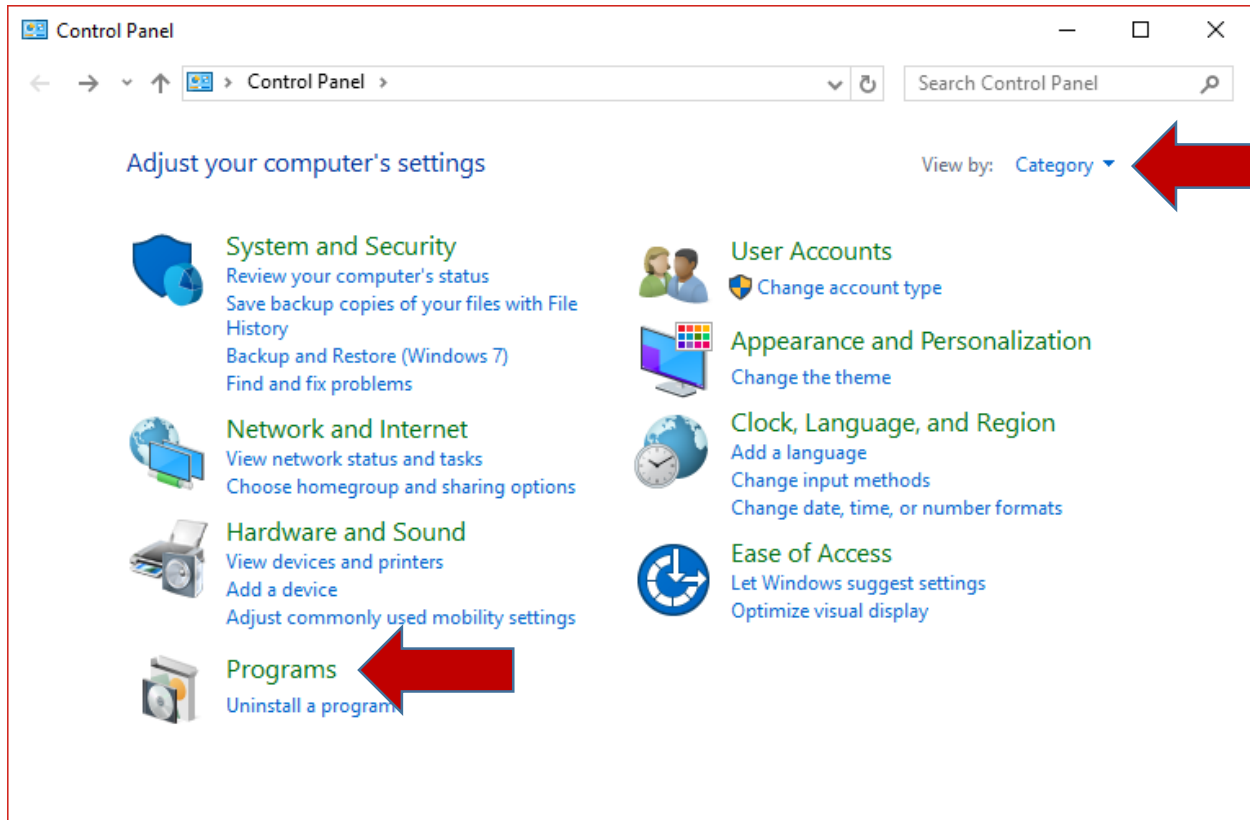


2. In the search bar type **Control Panel**:

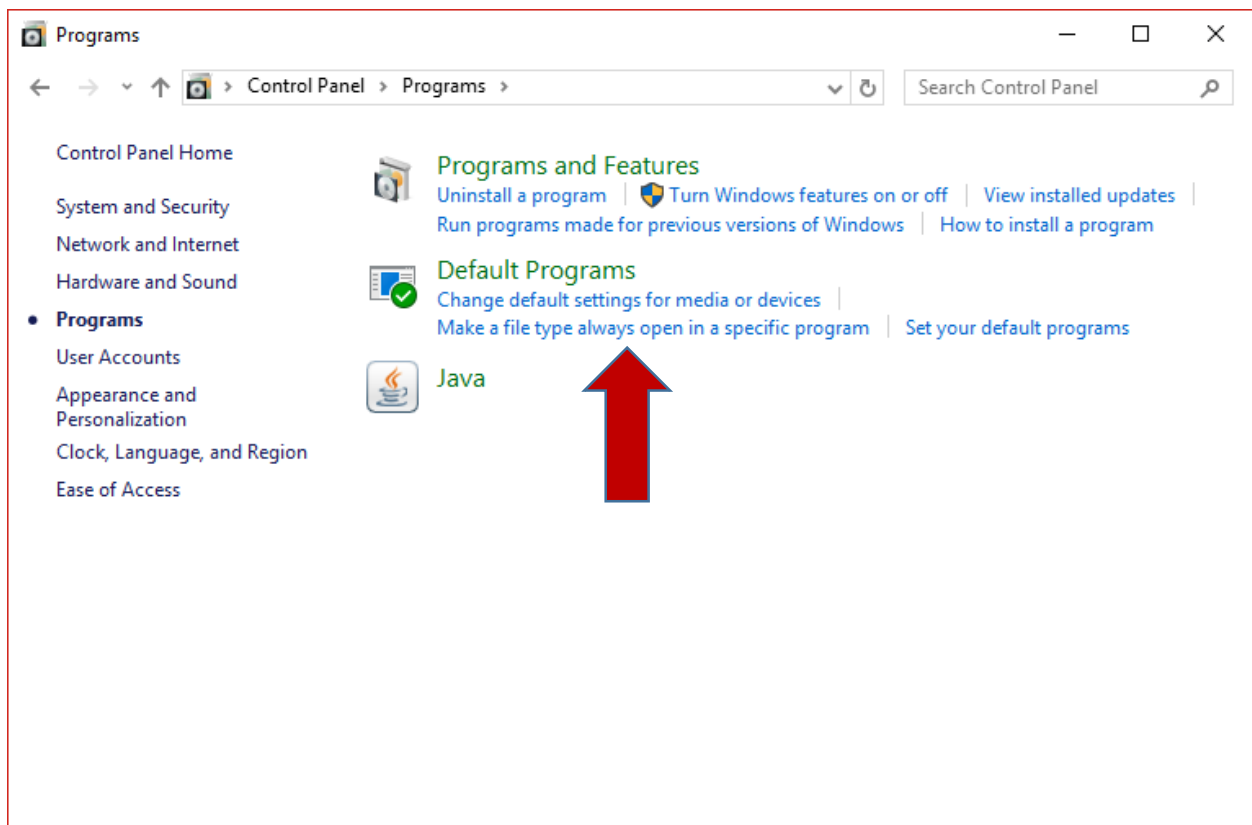


3. Set **View By** in the top right corner to **Category**

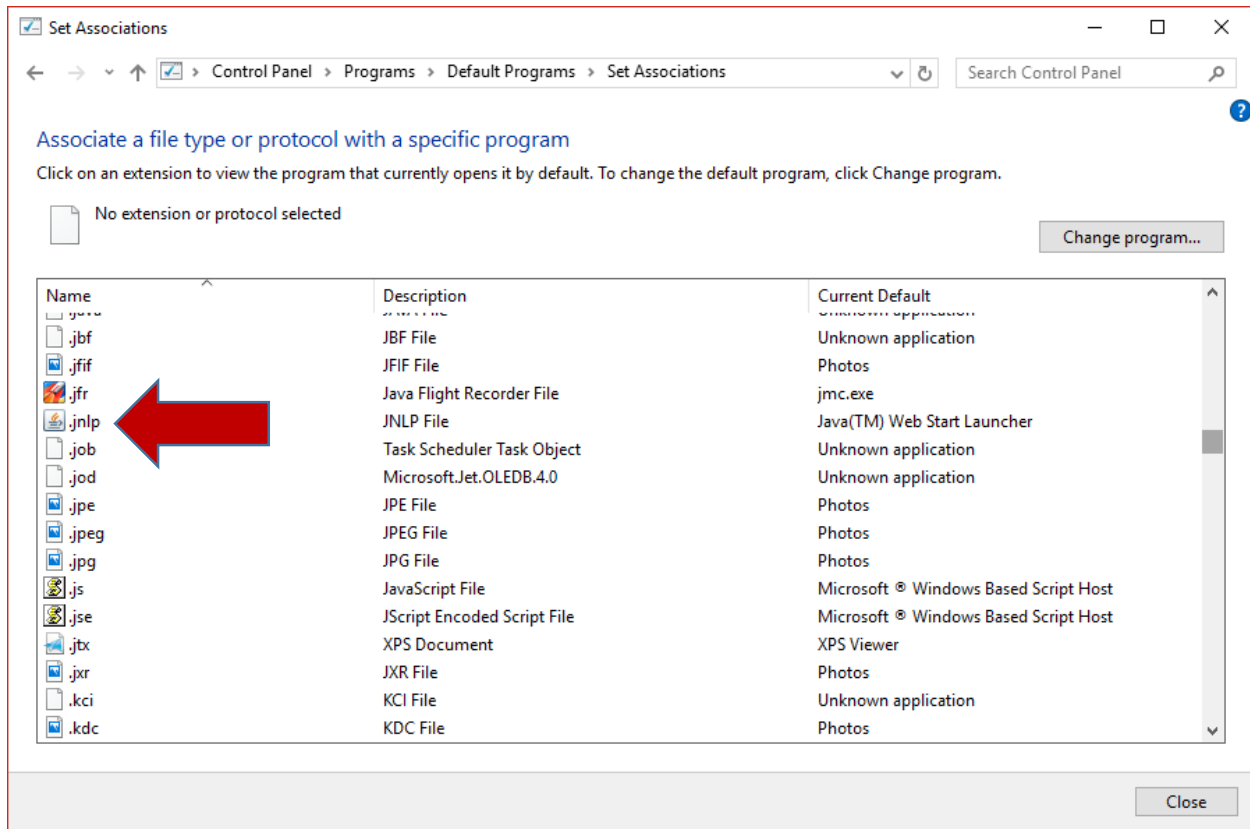
4. Click on **Programs**



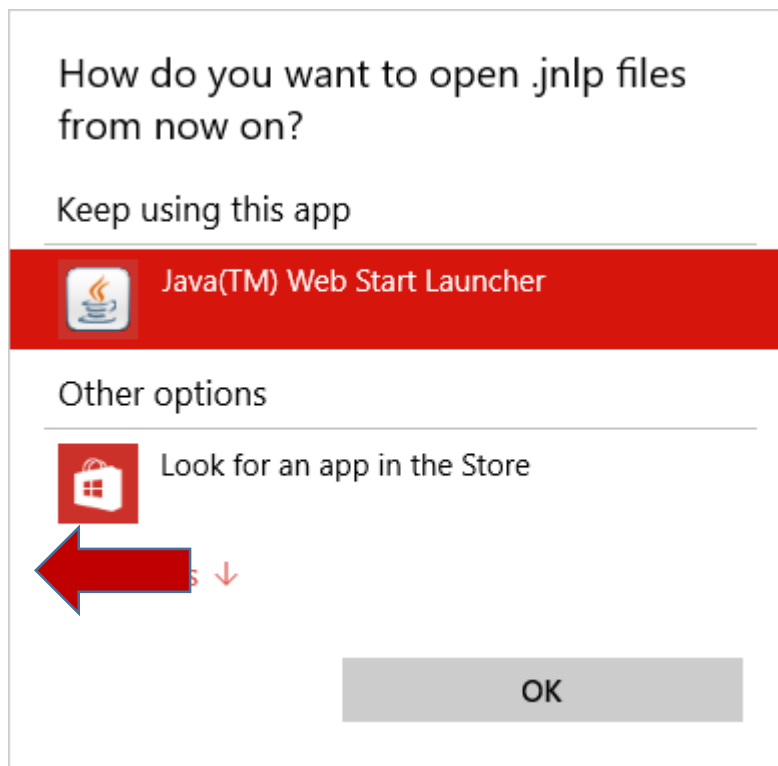
4. Click on **Make a file type always open in a specific program**



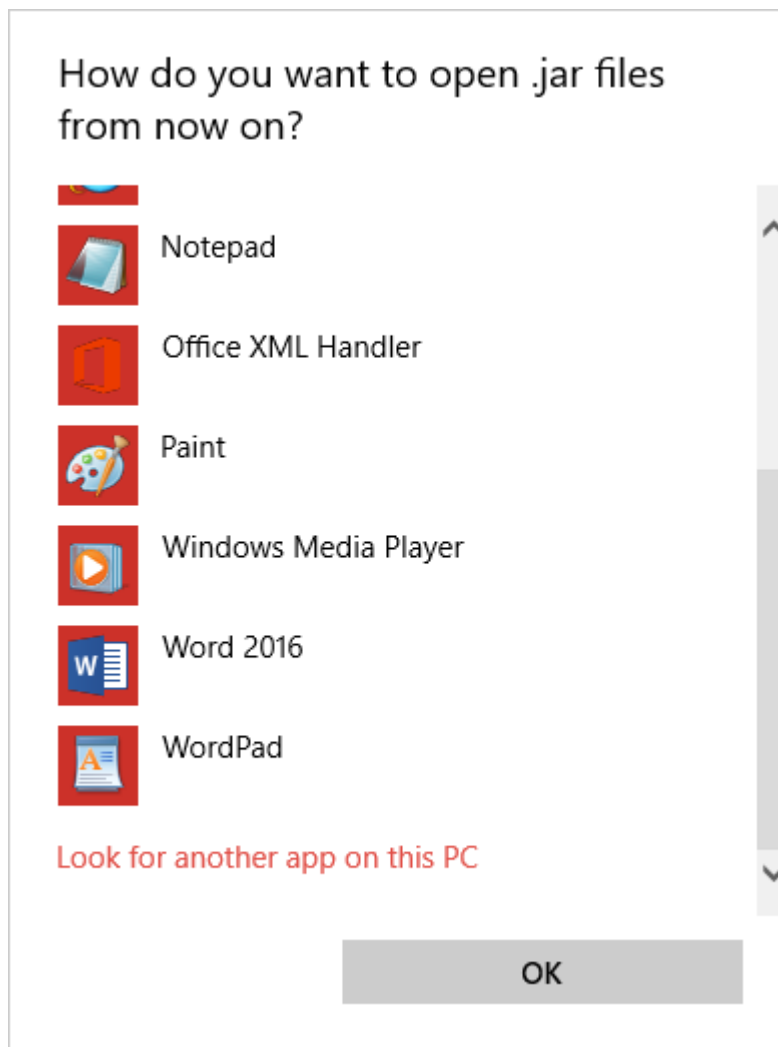
5. Wait...And then when you see this screen, scroll down to find **.jnlp** on the left. Yours will NOT show the java icon. Double-click **.jnlp**



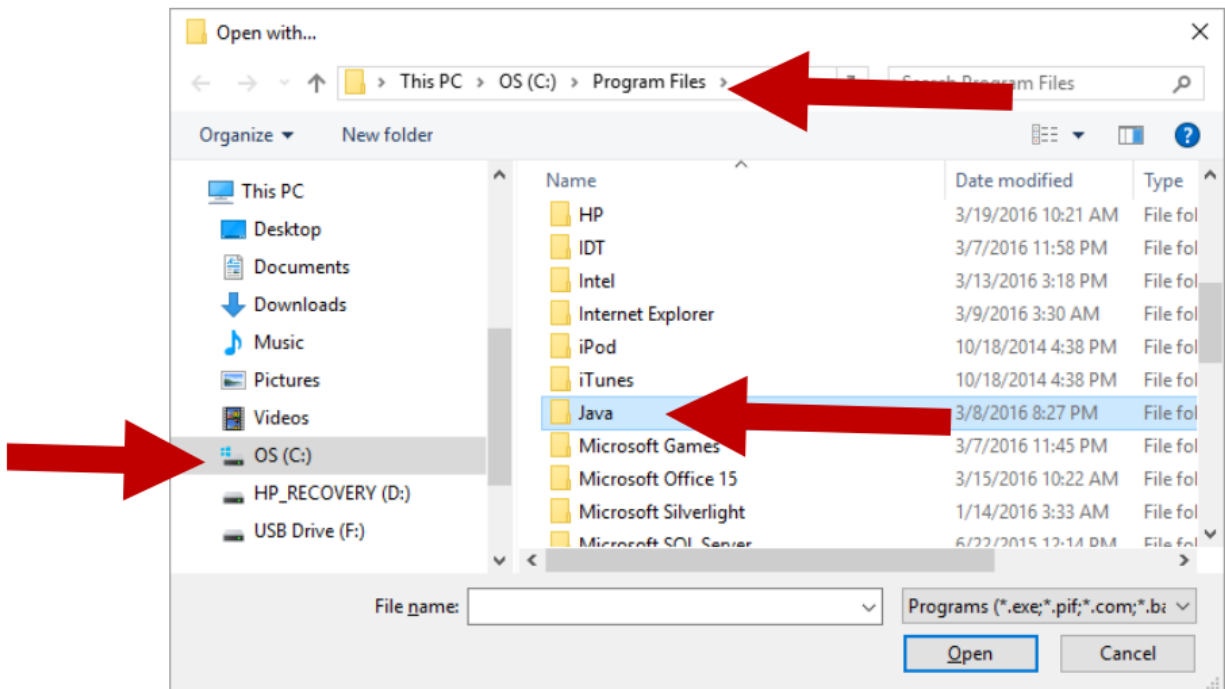
6. Select **More Apps** on this screen



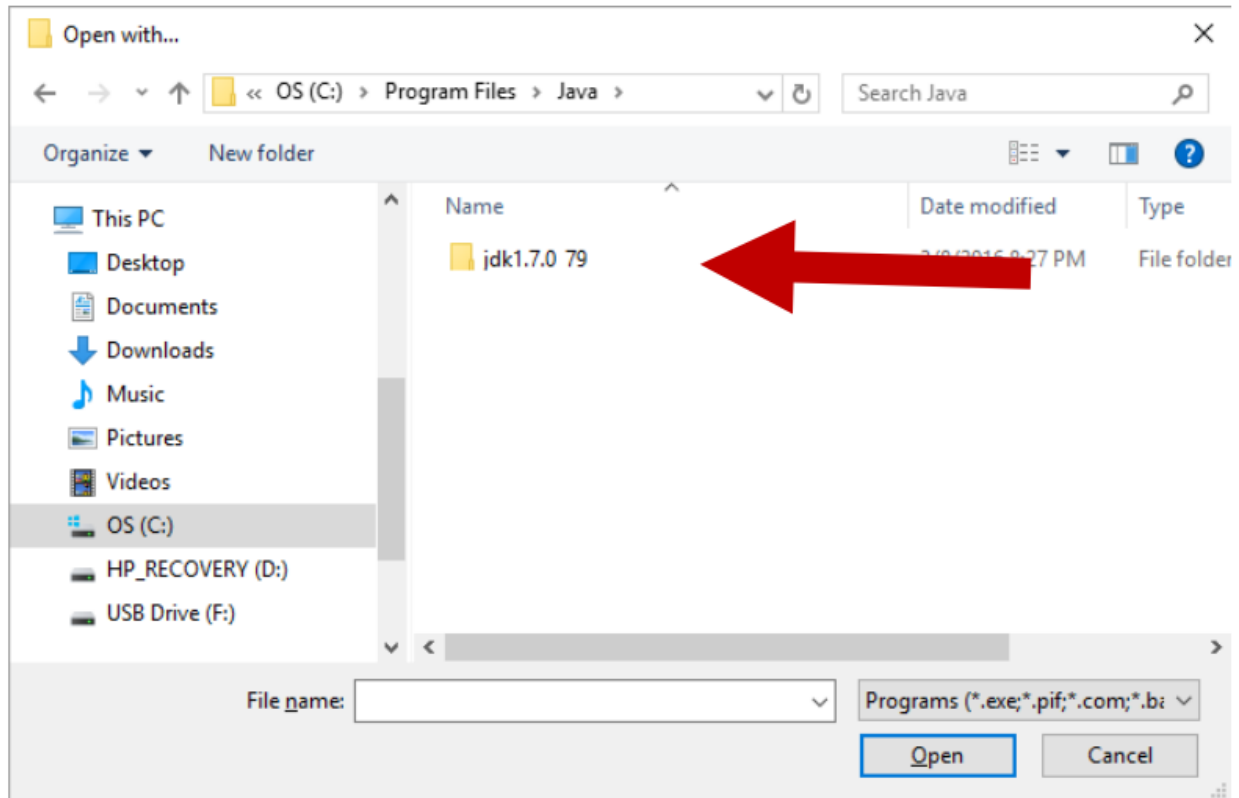
7. Scroll to the bottom and select **Look for another app on this PC**



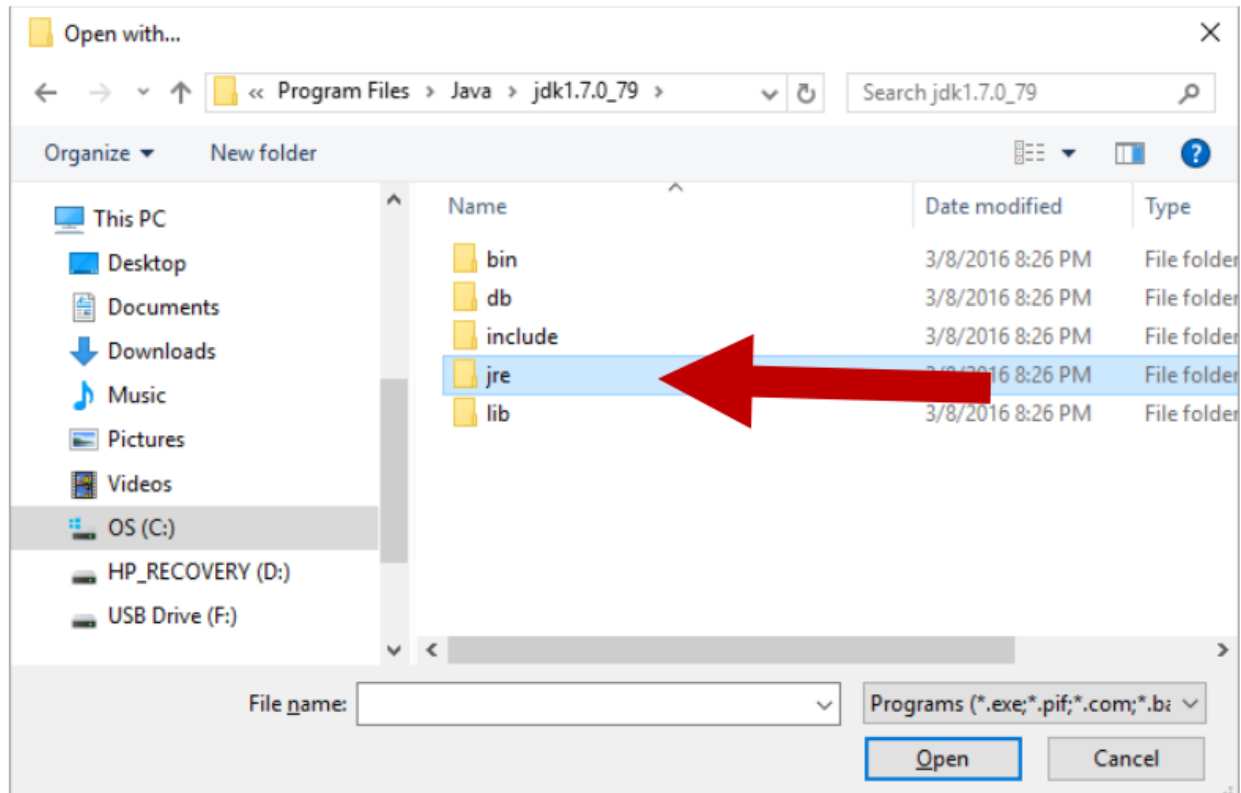
8. You will need to navigate to the folder that has the java application on your computer. Usually, this is in **C:\Program Files\java**



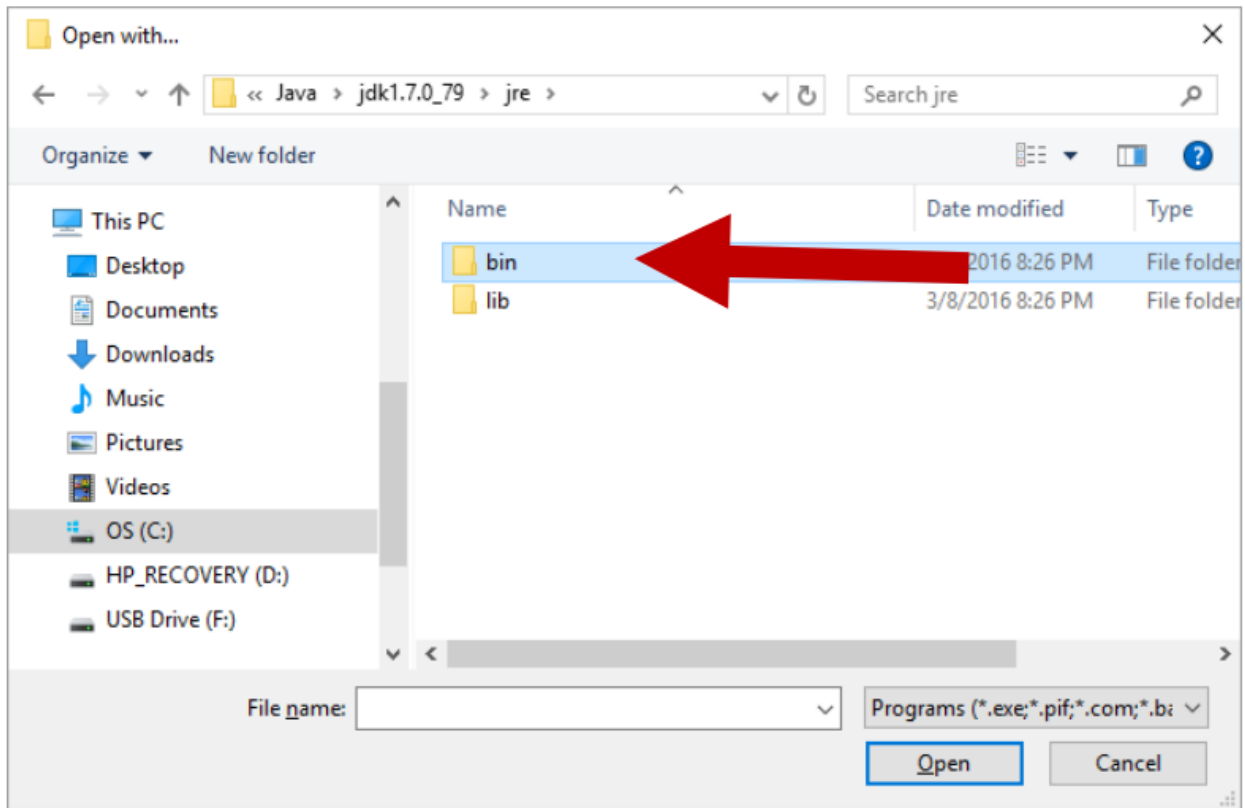
9. When you open the java folder, you should see a folder that looks something like this. It may say **jre** instead of **jdk** and you may have a higher number version.



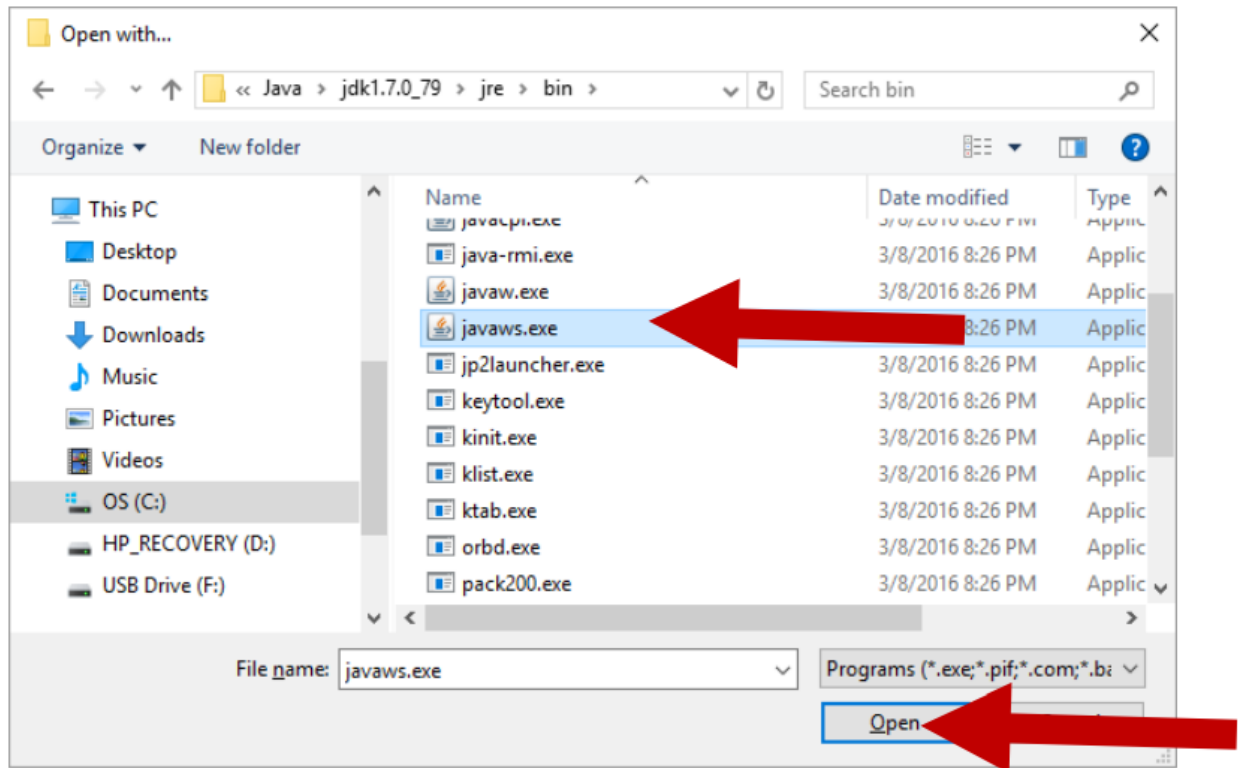
10. Open the **jre** folder



11. Open the **bin** folder



12. Click on **javaws.exe** and click **Open**



****END****